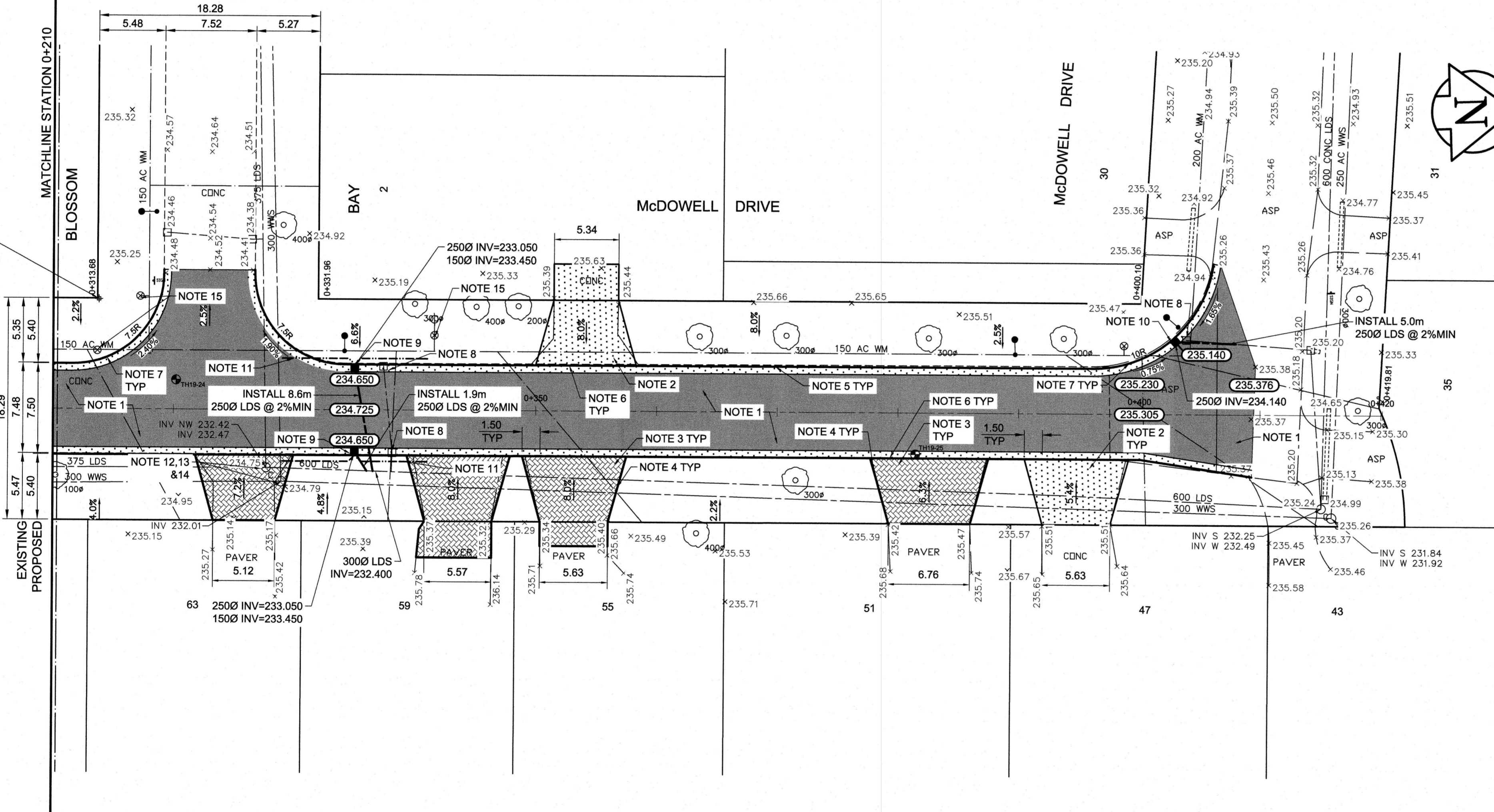


TYPICAL CROSS SECTION

NORTH: 5523490.823
EAST: 624420.114
ELEVATION: 235.190



REFERENCE NOTES

- A. PAVEMENT DIMENSIONS ARE TO BACK OF CURB
- B. BASELINE IS CENTRE LINE RIGHT-OF-WAY
- C. PROPERTY LINES OBTAINED FROM CITY OF WINNIPEG L.B.I.S., AND NO SCALE FACTOR WAS APPLIED
- D. REFER TO AECOM FIELD BOOK NO. 6038

CONSTRUCTION NOTES

1. REMOVE EXISTING CONCRETE AND ASPHALTIC PAVEMENT AND CONSTRUCT NEW ASPHALTIC PAVEMENT TYPE 1A (100mm)
2. REMOVE EXISTING CONCRETE PAVEMENT AND CONSTRUCT NEW 150mm REINFORCED CONCRETE PAVEMENT
3. REMOVE AND REINSTALL EXISTING PAVING STONES
4. CONSTRUCT NEW BARRIER CURB
5. CONSTRUCT NEW BARRIER CURB AND GUTTER (600mm WIDTH, 180mm HT.)
6. CONSTRUCT NEW LIP CURB AND GUTTER (40mm HT. INTEGRAL)
7. CONSTRUCT NEW MODIFIED BARRIER CURB AND GUTTER (600mm WIDTH, 180mm HT.)
8. REMOVE EXISTING CATCHBASIN AND ABANDON LEAD
9. INSTALL NEW CURB AND GUTTER INLET c/w CATCHBASIN 1800mm (SD-024) AND CONNECT TO EXISTING 600mm LDS
10. INSTALL NEW CURB AND GUTTER INLET c/w CATCHBASIN 1200mm (SD-024) AND CONNECT TO EXISTING LEAD
11. INSTALL 150mm SUBDRAIN
12. ADJUST EXISTING MANHOLE/CATCHBASIN TO GRADE
13. REMOVE EXISTING FRAME AND COVER AND INSTALL NEW FRAME AND SOLID COVER (AP-006 AND AP-007)
14. INSTALL NEW CAST IRON RISER RING
15. ADJUST EXISTING WATER VALVE TO GRADE

AECOM
Certificate of Authorization
AECOM Canada Ltd.
No. 4671 Date: Dec 6/19

METRIC
WHOLE NUMBERS INDICATE MILLIMETRES
DECIMALIZED NUMBERS INDICATE METRES

EXISTING	LEGEND - PLAN	PROPOSED	EXISTING	LEGEND - PLAN	PROPOSED	EXISTING	LEGEND - PROFILE	PROPOSED
150 mm W.M.	WATERMAIN	150 mm W.M.	HYDRO	M.T.S.	---	---	C PROFILE	---
300 mm L.D.S.	LAND DRAINAGE SEWER	300 mm L.D.S.	CONCRETE	CONCRETE	---	---	WEST GUTTER	---
250 mm W.W.S.	WASTEWATER SEWER	250 mm W.W.S.	ASPHALT	ASPHALT	---	---	EAST GUTTER	---
○	MANHOLE	○	PROPERTY LINE	PROPERTY LINE	---	---	NW PROPERTY LINE	---
□	CATCH BASIN	□	SURVEY BAR	SURVEY BAR	○	○	S/E PROPERTY LINE	---
▽	CATCH PIT	▽	ELEVATION	ELEVATION	(235.750)	(235.750)		
+	JUNCTIONS	+	TREE	TREE	○	○		
---	CULVERT	---	SIDEWALK RAMP	SIDEWALK RAMP	---	---		
---	GAS	---	CONCRETE SIDEWALK	CONCRETE SIDEWALK	---	---		
---		---	FENCE	FENCE	---	---		

LOCATION APPROVED
UNDERGROUND STRUCTURES

SUPV. U/G STRUCTURES COMMITTEE DATE

NOTE:
LOCATION OF UNDERGROUND STRUCTURES AS SHOWN ARE BASED ON THE BEST INFORMATION AVAILABLE. BUT NO GUARANTEE IS GIVEN THAT THE GIVEN LOCATIONS ARE EXACT. CONFIRMATION OF EXISTENCE AND EXACT LOCATION OF ALL SERVICES MUST BE OBTAINED FROM THE INDIVIDUAL UTILITIES BEFORE PROCEEDING WITH CONSTRUCTION.

NO.	REVISIONS	DATE	BY
0	ISSUED FOR TENDER	12/06/2019	BC
A	ISSUED FOR REVIEW	04/04/2019	BC

AECOM

DESIGNED BY: SS
DRAWN BY: SS

CHECKED BY: BC/KWR
APPROVED BY:

HOR. SCALE: 1:250
VERTICAL: 1:10

RELEASED FOR CONSTRUCTION BY: [Signature]
DATE: Dec 5/19

ENGINEER'S SEAL
PROVINCE OF MANITOBA
K.W. RAE
REGISTERED PROFESSIONAL ENGINEER

THE CITY OF WINNIPEG
PUBLIC WORKS DEPARTMENT
ENGINEERING DIVISION

2019 LOCAL STREET RENEWAL PROGRAM

MCDOWELL DRIVE - WESTLUND WAY TO MCDOWELL DRIVE NORTH
PAVEMENT RECONSTRUCTION
STATION 0+310 TO MCDOWELL DRIVE NORTH

CITY DRAWING NUMBER
SHEET 10 OF 10